



PARKLANDS PRIMARY SCHOOL
PRINCIPAL'S NEWSLETTER
Friday 6th January 2023



Families in Partnership meeting

We really do hope that you will be able to join us for our families in partnership meeting, with our Families in partnership team, along with our CEO, Mr Paul Watson for an update on the Trust and the school. This will take place at 3:30pm on Tuesday 10th January 2023, any children will be entertained by our wonderful teachers whilst you attend the meeting! We look forward to seeing you there.

Twitter permission

We love to share all of our fantastic learning and experiences on Twitter. Double check your twitter permission to make sure your child can appear on Twitter!

Forest schools – Volunteers wanted!

Do you enjoy being outdoors in all weathers and are not bothered about getting muddy? Are you fascinated by Nature and fearless around mini-beasts? Are you able to commit regularly to a Tuesday/ Thursday, morning or afternoon Forest School session (9.15am-11.45 or 1pm – 3pm) or After school Adventure Club? (Tuesdays 3.15pm-4.45pm, once daylight hours increase) If the answer is yes to all three questions, then please get in touch via the School Office!

We are also looking for several enthusiastic volunteers to join our Woodland maintenance team, can you spare a few hours, several times a year to help with various shrub clearance tasks? We would also be particularly interested to hear from anyone who may be able to offer their expertise, or donate materials to assist in the repair of several fences and help with the refurbishment of our wildlife pond. Any support in these areas would be hugely appreciated!

Allergies

We have a number of children with food allergies. Whilst most of these can be managed well by the child and the school, nut allergies can pose a different danger due to their nature. If a pupil with a nut allergy comes into contact with a nut product, it can have life threatening consequences. Often, these allergic reactions can come as a consequence of ingesting or touching nut particles if others within the same room are eating products containing nuts. It can easily be contracted from a simple touching of hands, not washing hands properly or touching tables that have been contaminated, or sitting near someone who is eating a nut based product.

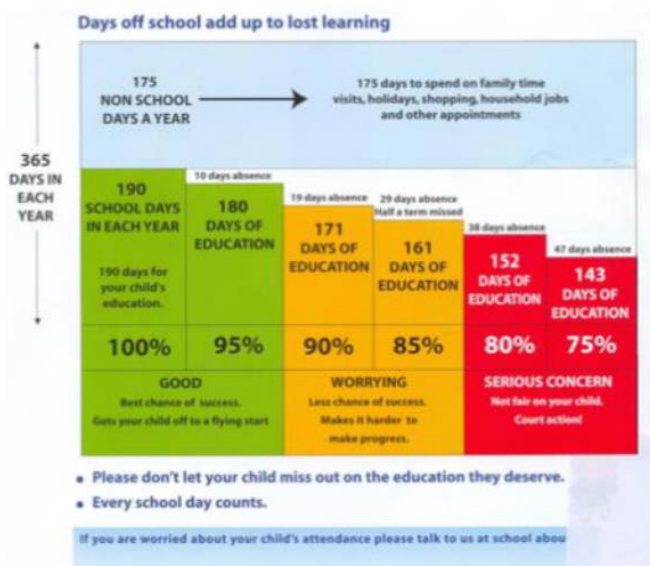
We have a number of children who can have unexpected and adverse reactions to nuts.

Please ensure that your child does not bring any products into school that contain nuts, for example nuts themselves but also peanut butter. Thank you for your support on this.

Attendance

You may have seen lots of articles in the news about the focus of the DfE on pupil attendance.

Post pandemic, none of us want our children to lose any more valuable education than they have already, but I thought it may be useful to share some visual attendance information that I have been sent with you, which makes you realise just how a few days here and there can impact on your child's learning!



Days Absent	Missed Time	Number of Missed Lessons	Attendance
1	1 day	6	99.5%
2	2 days	12	99%
3	3 days	18	98.5%
4	4 days	24	98%
5	1 week	30	97.5%
10	2 weeks	60	95%
15	3 weeks	90	92.5%
20	4 weeks	120	89.7%
25	5 weeks	150	87.5%
30	6 weeks	180	85%
35	7 weeks	210	82.5%
40	8 weeks	240	80%

Our average attendance at Parklands at the moment is between 94-95%, and falling below 95% is not ideal, so it is a good idea to keep an eye on your child's attendance figures through your Arbor app.

It is my duty to notify you if your child's attendance is beginning to cause concern and may impact on their learning, and from next term, I will send letters out to parents to alert you to this.

As you are aware, the DfE does not allow me to authorise any term time holidays.

Thank you so much for your support in this.

Key dates

Tuesday 10th January - Families in partnership meeting - 3:30pm open to all parents

Friday 13th January - KS1 reading café restarts - 2:45pm

Thursday 19th January - Lunar / Chinese new year celebration - non uniform

Wednesday 25th January - Year 5 / 6 netball

Wednesday 8th February - Year 3 class assembly - PM - Information to follow

Friday 10th February - Last day of term

Monday 20th February - start of Spring term 2

Have a wonderful weekend, everyone!

