

A young boy in a blue sweater and dark trousers is walking across a colorful, segmented path in a schoolyard. The path is made of large, rectangular blocks in shades of blue, red, and yellow. In the background, there is a wooden fence and a building with large windows. The entire scene is overlaid with a semi-transparent blue filter.

PRESTON HEDGES TRUST

Year 1

PRESTON
HEDGES
TRUST



Staff

Teacher: Miss Beacall

Teacher: Miss Rumsey

TA: Mrs Gibbons (1B)

TA: Mrs Goodall (1B)

TA: Mrs Matcham (1R)

A standard day in Year 1

	8:45-9:00	9:00-9:30	9:30-10:30	10:30-10:45	10:45-11	11-12	12-1	1-2:30	2:30-2:45	2:45-3:15		
Monday	EMW/ Registration	Phonics/ Handwriting	Maths	Break	Spellings	English	Lunch	Science	Break	Story time		
Tuesday	EMW/ Registration	Phonics/ Handwriting	Maths	10:10 – 10:30 Phase Assembly	Break	SPaG	English	Curriculum	Break	Story Time		
Wednesday	EMW/ Registration	Phonics/ Handwriting	Maths	Break	SPaG	English	Lunch	PD	RE	Music	Break	Story time
Thursday	EMW/ Registration	Phonics/ Handwriting	Maths	Break	SPaG	English	Lunch	Art/DT	Computing	Break	Story Time	
Friday	EMW/ Registration	Phonics/ Handwriting	Indoor PE	Break	Reading	Lunch	Outdoor PE	Library/ Book Change	Break	READING CAFE		

Subjects taught weekly

- English
- Phonics
- Handwriting
- SPaG
- Maths
- Science
- Creative curriculum (history/geography)
- Art/DT
- Music
- P.E
- R.E
- Computing

Maths and English

Maths

This term: Number and Place Value

Every day maths lessons.

Starts very practical.

Lots of whiteboards/ talking to partner.

End with book lessons.

Build to reasoning.

TA to support groups.

English

Genre to outline techniques.

Reading- looking at a good example to pick out things we want.

Practice techniques.

Shared write.

Independent Big Write.

Handwriting- big focus.

Reading and phonics

Book Change: Monday and Fridays- diary must be signed and book read at least 3 times.

Library: fortnightly Fridays

1:1 readers through the week.

Daily phonics- sounds in reading diary to refresh.

Guided Reading after January.

5 Signatures

Vending Machine

Reading Cafe

Spellings

Weekly spellings given out on Monday- quiz the following week.

Mirror the phonics sounds of the week and harder to read and write words.

<u>Harder to Read Words</u>			
<u>Reception</u>			
I	push	some	could
the	was	come	asked
no	her	there	house
put	my	little	mouse
of	you	one	water
is	they	do	want
to	all	children	very
go	are	love	
into	ball	oh	
pull	tall	their	
as	when	a	
his	what	people	
he	said	Mr	
she	so	Mrs	
buses	have	your	
we	were	ask	
me	out	should	
be	like	would	

<u>Harder to Read Words</u>
<u>Year 1</u>
please
once
any
many
again
who
whole
where
two
here
sugar
friend
because

PHASE 2	PHASE 3	PHASE 5
S s a t p p	J j V v W w X x y y	ay ou ie ea
i i n m d	Z z ZZ zz qu ch sh	oy ir ue aw
g o c k k	th ng nk ai ee	wh ph ew oe
ck e u r r	igh oa oo ar ur	au ey a-e e-e
ss ss h b f	oo or ow oi ear	i-e o-e u-e c
l ff ll	air ure er ow	

Handwriting

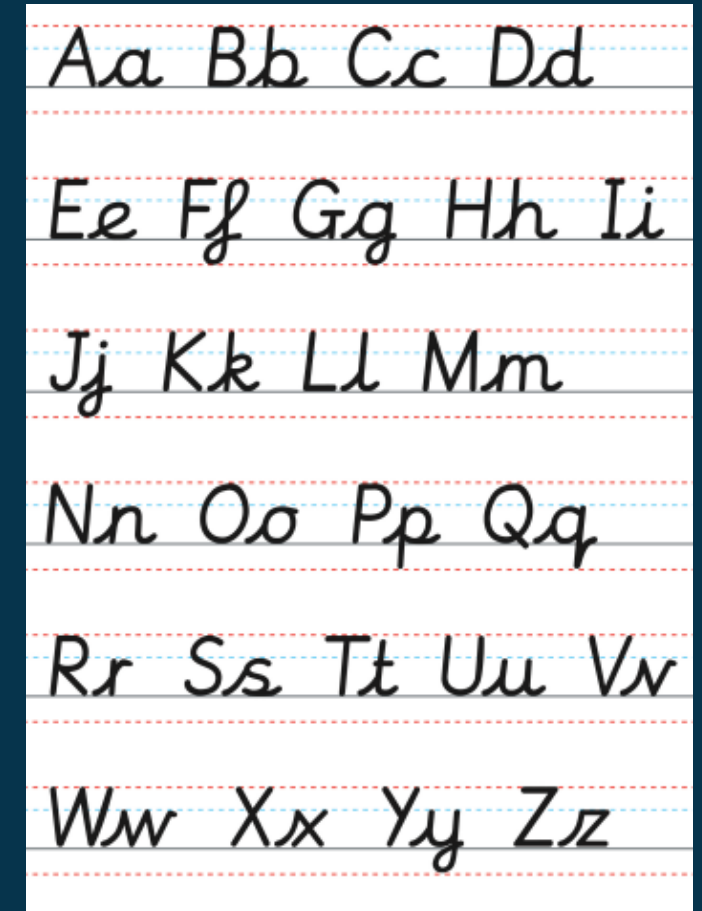
Cursive is a handwriting style where all letters have an entry stroke which means letters always start from the same place.

Letters are produced in a flowing movement, which helps the development of a physical memory of how each letter is written.

Letters all start in the same place and flow from left to right, which reduces the likelihood of reversal mix-ups such as b/d and p/q.

Because of the smooth flow, writing soon becomes quicker and easier.

There is no messy transition stage when children move from print to a joined style. If cursive writing is taught from the start, only one style is needed.



P.E

- Indoor: Dance
- Outdoor: Athletics

- Parklands P.E uniform:
 - Navy shorts/joggers
 - Navy polo (logo/plain)
 - School jumper/fleece
 - Trainers/plimsoles

- Earrings removed by the child (no tape)

Our Curriculum

- Our creative curriculum topic this term is **Into Northampton**
- Our curriculum provides exciting opportunities to learn through experiences rather than written evidence.
- We are starting with a Geography topic which will help the children to develop an awareness of their local area and their place within it
- Ensures that key skills are learned within an interesting, relevant context

Exciting things to come...

- Class assembly
- KS1: Parents Workshop
- Year 1 Phonics Screening – nothing to panic about!
- Trips

How can I help my child?

- ▶ Read with your child as many times a week as you can.
 - Scheme books
 - Oxford reading buddy
- ▶ Practise spellings.
- ▶ Practise phonics.

Correspondence

- Facebook
- Instagram – NEW!
- School website
- Seesaw

The screenshot shows a web browser window with the URL parklands.northants.sch.uk/correspondence/. The browser tabs include 'New Tab', 'Google', 'Hotmail', 'Files - Dropbox', 'Sainsbury's online Gr', and 'Maths worksheet gen'. The website header features the Parklands Primary School logo (two trees in a circle) and the text 'PARKLANDS PRIMARY SCHOOL' on the left, and 'PRESTON HEDGE'S ACADEMY TRUST' with contact information 'Tel: 01604 491769 • admin@parklands.northants.sch.uk' on the right. A navigation menu below the header includes 'WELCOME', 'OUR SCHOOL', 'INFORMATION', 'CURRICULUM', 'PARENTS', 'SCHOOL NEWS', and 'CONTACT'. A dropdown menu is open over the 'PARENTS' link, listing 'CORRESPONDENCE', 'HOMEWORK', 'UNIFORM', 'TERM DATES', 'KEY DATES', and 'ABSENCE'. The main content area is titled 'CORRESPONDENCE' and contains the text 'Here are some letters from the week – please click on them to go to'. Below this are several links: 'Years 1 & 2 Tea Party', 'Year 6 Pioneer June 2019 (1)', 'Year 5 WW2', 'How to apply for secondary 2019 parent letter', and 'RW letter'.

But most importantly...

If you have any questions or queries, please call the office any time and book a phone call chat.

Our 'doors' are always open and you are welcome to have a chat.

Thank you, from the Y1 team.