



## Parklands Principal's Newsletter 8.9.23

Welcome back!

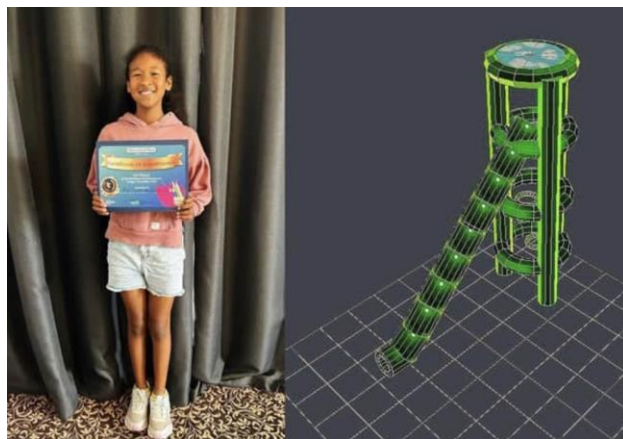


I hope that you have all had a wonderful Summer break, it feels as though I was just wishing you a wonderful summer holidays! How quickly time flies. The children have settled into their new year groups beautifully, and we are very excited for the year ahead of us! As you can see, I am trying to move into the 21st century and have started using Sway for my newsletter, one of the new exciting changes for this year!

## School social media accounts



Following parent surveys, we have adjusted our school social media accounts! We now have an active Parklands and Instagram social media accounts, where you will receive whole school updates, celebrations of achievements and wonderful examples of the children's love of learning! If you are not yet following please search for Parklands Primary school on facebook and instagram, where you will find our account with our school logo!



*1 - Exciting News!*

I am delight to share that one of our amazing former pupils, Mia, who has just started Year 7, won a design competition and will now see her work built and installed at Wicksteed Park! Mia impressed the judges with her creativity, detail and use of 3D modelling software! She will have the opportunity to visit the factory while it is being built and receive a prize from Kettering Mayor! Congratulations to Mia, we are all very proud of you!

More exciting News!



We were so excited to receive the news that we have been shortlisted for Primary School of the year and Headteacher of the Year at the Northamptonshire Education Awards 2023! We are so proud of all of our wonderful children, staff team and entire school community! We are keeping our fingers crossed for the results in November!

Congratulations to Miss Thompson!



As you know Miss Thompson will be based at one of our Trust schools, Pineham Barns, for this academic Year! Although gone for now, she is certainly not forgotten and we want to congratulate the now Mrs Websdale and her husband on their beautiful wedding day, which took place over the summer! Mrs Websdale looked absolutely stunning and had the most special day!

# Attendance Ladder



As you know, high attendance is so important for our children to make good progress in learning, and I always like to share a little bit of attendance information with you at the start of the academic year to help you understand the impact that even just a few days off can have.

Our average attendance at Parklands at the moment is 96%, but as you know, falling below 95% can have a negative impact on your child's learning progress throughout the year. I completely understand that children can sometimes be poorly, and when they are not well enough to come to school, they should be at home. But, if your child is a bit under the weather, and you are not sure whether to bring them in or not, please do send them in. If they do feel worse throughout the day, we will ring you. The NHS has a

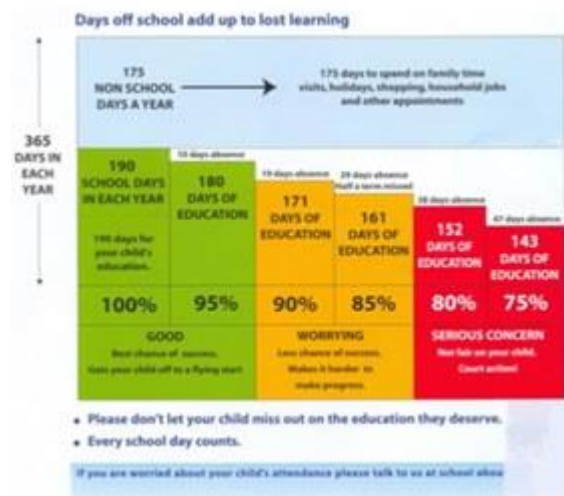
handy guide on whether your child is too ill for school that you can access [here](#). Although you may feel worried if we get in touch with you about absence, it is our statutory duty to notify you if your child's attendance is beginning to dip, and therefore, if your child's attendance drops below 95%, we may contact you just to alert you that their attendance is beginning to be of concern.

Attendance below 90% is persistent absence, and if your child become persistently absent, we will invite you in for a meeting. Please note that at this stage, we do have to notify our attendance officer in the local authority of their absence and that they are persistently absent.

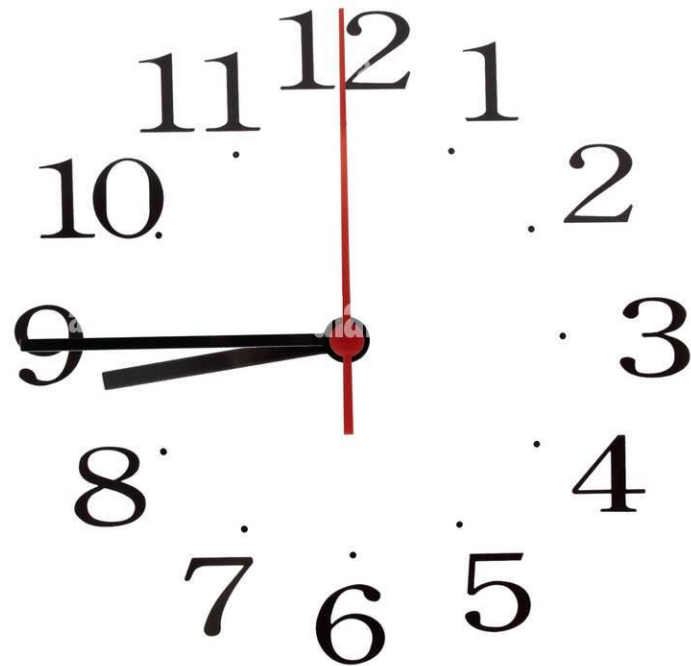
As you are aware, the DfE does not allow me to authorise any term time holidays.

Thank you so much for your support in this.

Days Absent	Missed Time	Number of Missed Lessons	Attendance
1	1 day	6	99.5%
2	2 days	12	99%
3	3 days	18	98.5%
4	4 days	24	98%
5	1 week	30	97.5%
10	2 weeks	60	95%
15	3 weeks	90	92.5%
20	4 weeks	120	89.7%
25	5 weeks	150	87.3%
30	6 weeks	180	85%
35	7 weeks	210	82.5%
40	8 weeks	240	80%



## Timings for the School Day



alamy

Image ID: D54CD2  
www.alamy.com

We just wanted to remind you that our school day begins at 8.45am, and the children start their morning learning as soon as they arrive. The gates are opened from 8.30am, so please do make sure that your children are on site ready for the teacher opening their door at 8.45am. Please can we also remind you that the car park is for staff and disabled badge holders only. If you have a disabled badge, our site supervisor may well come around checking that everything is still in date, and that the badge is for the driver of the vehicle or for the children attending school in order for us to update our risk assessment for this academic year.

## Upcoming Events and Key dates



### **Book fair**

13th - 19th September the book fair will be available before and after school outside the main office reception area, or inside if it is bad weather!

### **Welcome to Year Group Parent Meetings - 3pm in the school hall**

Monday 11th September - Year 6

Tuesday 12th September- Year 5

Wednesday 13th September - Year 3

Thursday 14th September - Year 4

Friday 15th September - Year 2

Monday 18th September -Year 1

Key stage 1 Parent Workshop - Maths / Phonics / Reading / Spelling - Monday 25th September - 5pm in the school hall

Key stage 2 Parent Workshop - Maths / Reading / SPaG - Wednesday 27th September - 5pm in the school hall

Any presentations from welcome to Year group meetings and workshops will be shared with parents and will be available on our Website.



Parents Evenings: Wednesday 11th October & Thursday 12th October - Further information will follow regarding booking on for parents evening in the coming weeks